

# A. Vincent May, Inc.

For more information,  
contact Kathy May

(270) 978-4067 or  
kathy@vincemay.com

## INTRODUCING ELECTRICAL SAFETY HANDS-ON TRAINING!

### Real-World Training

This is the training your company needs...

***and your employees want!***

### One-day hands-on training with job tasks, tailored to your company's specific needs

This class will also cover new items required in the 2018 NFPA 70E:

- Hands-on labs for employees to comply with demonstrated ability requirements in 70E
- Employees will be using Job Safety Analysis (JSA) procedures
- JSA's are a part of paperwork completed documenting employees have safely and correctly completed the labs

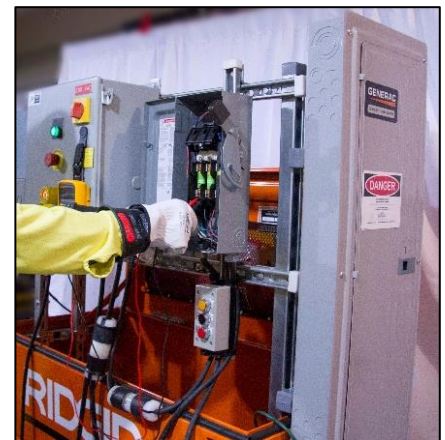


### OBJECTIVES

- Properly select PPE and safely troubleshoot control & power equip.
- Selection of PPE based on 70E tables, equipment labels, or when no labels are available
- How to determine if live work permits are required and how to fill them out
- Help your employees build good electrical safety habits for many common tasks

### HANDS-ON LABS

- Select and Inspect PPE, Tools, and Test Equipment
- Check Cords, GFCI's, Review NEC 590.6 (B) Assured Equipment Grounding Conductor Checks
- Verify an Electrically Safe Work Condition/LOTO
- Use of Verisafe Absence of Voltage Tester
- Motor Control Panel
- Generator Panel with Receptacles and Transfer Switch
- Motor Control with Variable Frequency Drive and PLC
- Rackable Breaker from Switchgear
- Personal Protective Grounds Installation
- Motor Windings Checks – Short, Grounds, Open



*"Our team always looks forward to a Vince May class, and the Hands-On class was no different. The training stations were well thought out with multiple opportunities for Teammates to demonstrate the competency required to do each task. At the end of each session, participants had detailed documentation showing what tasks they had done that day, signed off and ready to go. All in all, it was a great way to help ensure your team is working safely!"*

*Chris Widdicombe, Nucor Steel*